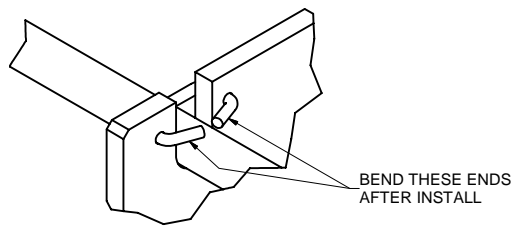
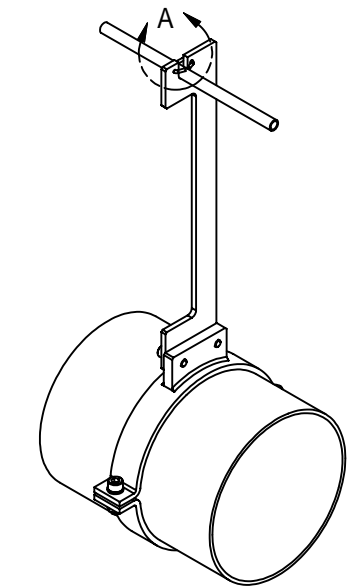
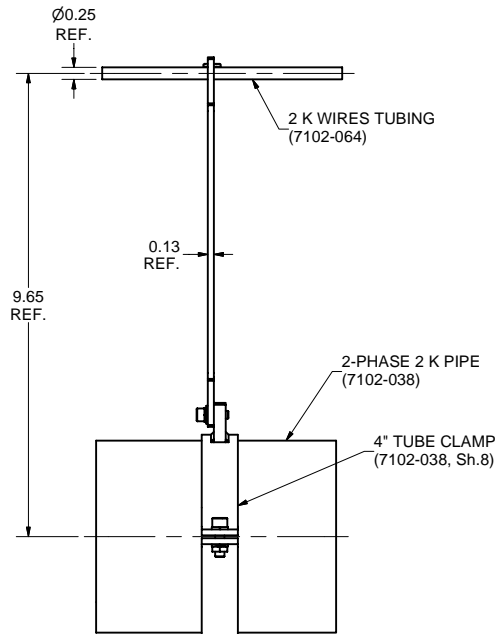
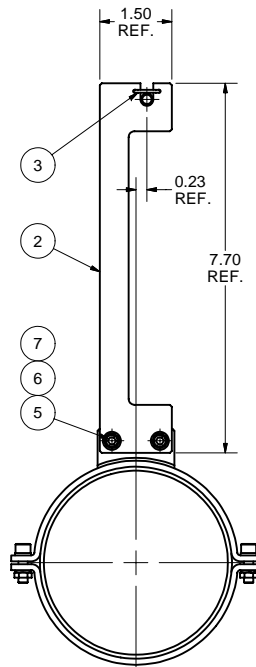


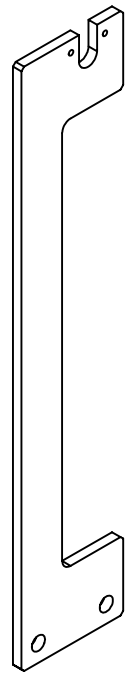
REVISIONS				
SYM.	ZONE	DESCRIPTION	DATE	APP.



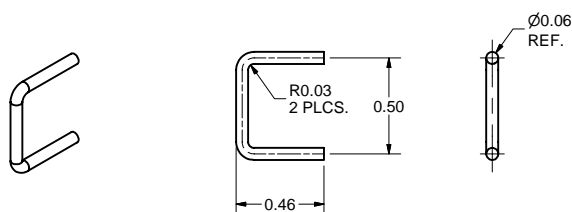
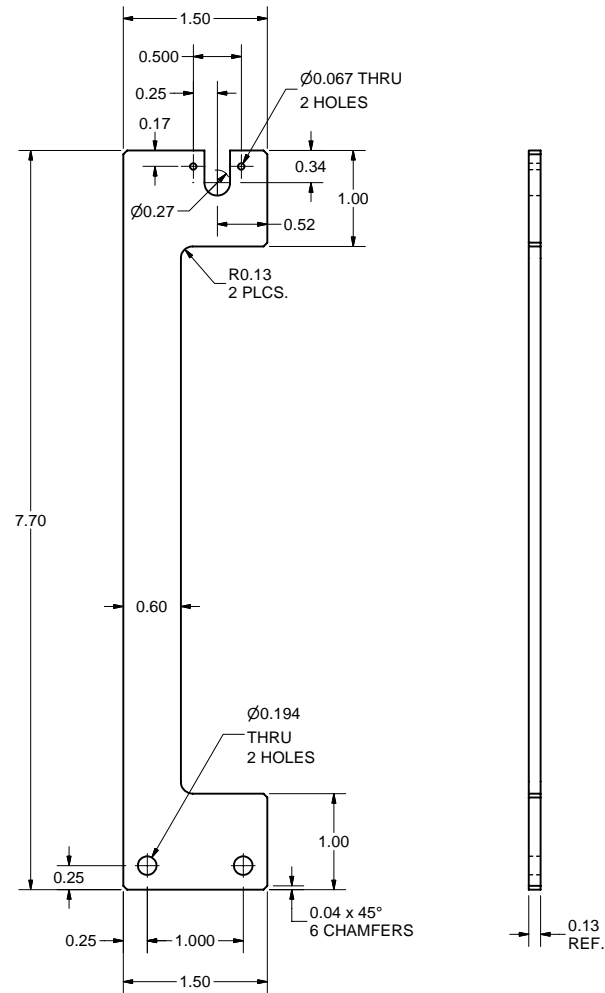
DETAIL A
SCALE 2:1



- 1 2 K WIRES TUBE SUPPORT ASSEMBLY
- FILE NAME: 7102-087
SHEET NO.: 1
DFT. SCALE: 1:2
MATERIAL:
QTY: 3 PER CRYOMODULE
NOTES:




- 2 2 K WIRES TUBE SUPPORT
- FILE NAME: 7102-087
SHEET NO.: 1
DFT. SCALE: 1:1
MATERIAL: 1/8" G-10 SHEET
QTY: 3 PER CRYOMODULE
NOTES:



- 3 LOCK CLIP
- FILE NAME: 7102-087
SHEET NO.: 1
DFT. SCALE: 2:1
MATERIAL: 1/16" WIRE (316 ST. STEEL OR ALUMINUM OR CUPPER)
QTY: 3 PER CRYOMODULE
NOTES: 1. DEVELOPED LENGTH: L = 1.3 IN.

7	Purchased	#8 Washer, 0.375 OD, 316 SS	2			McMaster-Carr's 90107A010	
6	Purchased	#8 Spring Washer, 316 SS	2			McMaster-Carr's 92147A425	
5	Purchased	#8-32 x 1/2 Socket Head Cap Screw, 316 SS, Diconited	2			McMaster-Carr's 92185A194	
3	7102-087 (Sh.1)	LOCK CLIP	1				
2	7102-087 (Sh.1)	2 K WIRES TUBE SUPPORT	1				
1	7102-087 (Sh.1)	2 K WIRES TUBE SUPPORT ASSEMBLY	X				

		ITEM	DWG. NO.	DESCRIPTION			G1	G2	G3	REMARKS	REV.
					QUANTITY						
D	PRINT DISTR.	PLOT DATE: 12/4/2007 CAD FILE NAME: 7102-087.idw									
	7102-087 SH. NO. 1 OF 1	CR-1	UNLESS OTHERWISE SPECIFIED: DIMENSIONS ARE IN INCHES: TOLERANCES ON: .0 ± .02 .00 ± .010 .000 ± .005 FRACTIONS ± 1/32 ANGLES ± 0.5° ALL SURFACES ✓		<div>CORNELL UNIVERSITY  CORNELL UNIVERSITY Floyd R. Newman Laboratory Ithaca, NY 14853</div> <div>ERL INJECTOR CRYOMODULE 2 K WIRES TUBE SUPPORT 2 K WIRES TUBE SUPPORT ASSEMBLY; 2 K WIRES TUBE SUPPORT; LOCK CLIP</div>						
REV.		CHECKED BY: V.M. APPROVED BY: V.M.	DRAWN BY vm	DRAWN FOR M.Liepe	DATE 10/22/2007	SCALE	D		7102-087 SH. NO. 1 OF 1		REV.

CORNELL UNIVERSITY
FLOYD R. NEWMAN LABORATORY
ITHACA, NY 14853

ERL INJECTOR CRYOMODULE
2 K WIRES TUBE SUPPORT
2 K WIRES TUBE SUPPORT ASSEMBLY; 2 K WIRES TUBE SUPPORT; LOCK CLIP